



# The official publication of the Omaha Quilters' Guild

April 2012

Organized in 1975, the Omaha Quilters' Guild is dedicated to the appreciation of the art and the craft of quilt making through education and participation.

### Special points of interest:

- April Board Meeting  
April 3, 2012—7:00 p.m.
- OQG General Meeting —  
— April 10, 2012
- Visit the OQG website at  
[www.omahaquiltersguild.org](http://www.omahaquiltersguild.org)
- Next newsletter article deadline  
is April 13, 2012.

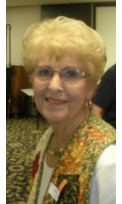
We will also be voting on our 2012-2013 guild officers at the April 10th meeting.

### Please come!

At least 25% of our membership must attend in order for us to have a quorum to vote.



## See you in April when Sue Benner will be with us!



Ms. Benner is a fabric artist from Dallas, Texas. Sue lectures and teaches workshops nationally and internationally in the fields of surface design, textile collage, fused quilt construction, and artistic inspiration. Her work has been juried into Quilt National seven times. She is an innovator in her field and is known for her combination of recycled textiles which she uses to form fields of structured pattern, vivid beauty and riotous variation.

Her lecture "The Working Path" will be offered to our members and guests at the April 10, 2012 meeting at 7:00 p.m. If you want to learn more about Sue Brenner and her work, check out her website at <http://www.suebenner.com/Pages/AboutArtist.html>.

The workshop class "Fusing The Grid" will be held on April 11 and 12, 2012 from 9:00 a.m. to 4:00 p.m. both days. Registration is limited to 20 students. **The both classes are filled.**



## Omaha Quilts 2012: A Piece Rally

Rainbow, Moonbeam and Sunshine  
(Betty), (Jan) and Karen)

June 21, 22 and 23, 2012 at the LaVista Conference Center

### Inside this issue:

Quilt Show	2-4
Membership	5
Rising Stars	5
Block Exchange	6
Helping Hands	6
President's Message	6
Budget	7
Minutes	8-9
Camp Wannamakeablankie	10

### Hey Jude,

Remember how your computer used to greet you with "You've got mail" when you logged in? Well lately, all I've been getting is the Sounds of Silence. It's left me a bit Dazed and Confused and in something of a Purple Haze but I keep reminding myself that Only the Strong Survive. Yesterday, I even worried that I was having a Psychotic Reaction, Crying 96 Tears (yes, 96!), breaking into a Cold Sweat and feeling terribly Dizzy, at the prospect of saying, "Please Mr. Postman, is this the Magic Moment that I get some quilt show entries?" Sadly, You Can't Always Get What You Want. He assured me that One Fine Day I would have so many entries that I would be on Cloud Nine. In the meantime, he advised me to buy a Bottle of Wine (or two or three) and stop

acting like The Fool on The Hill. God Only Knows, that I want to say that I'm A Believer but you've got me on Needles and Pins.

I know that many of you work best In The Midnight Hour but please keep the April 10<sup>th</sup> entry deadline in mind. You will still have two full months to complete your projects, we just need your paperwork. Why I've even heard of some people (surely those who were just Born To Be Wild), who enter quilts they haven't even started! So go ahead, Shop Around and find that Sweet Inspiration that you need to Do Your Thing. I'll Say a Little Prayer for You. (God Only Knows, you'll need it.)

Now Walk Don't Run to your sewing rooms and get busy on your entries. Remember that

when we Come Together in April, we will be voting for our favorite beaded lanyard in the Great Love Bead Contest. Bring your entry and if you win, Oh Happy Day! Won't you be a Proud Mary (or Martin)!

I'll bet you're Glad All Over that I'm about out of song titles from the late 60's. Hope it has gotten you in the spirit of Omaha Quilts 2012: A Piece Rally where we guarantee you'll have some Hot Fun in the Summertime!

Rainbow, Moonbeam and  
Sunshine

PS

Has anyone seen my Green Tambourine? I seem to have misplaced it. The last time I remember having it was when we were all together in MacArthur Park. Remember-someone left the cake out in the rain. . .

## Here Comes the Judge ...

Meet our 2012 Quilt Show Judge.



her love of quilting to help others

Kate Eelkema is a recently retired elementary school Media Specialist who lives in St. Paul, MN. She enjoys combining her background in education with

create their own works of art.

A National Quilt Association Certified Judge, she judges quilt shows, teaches quilting workshops, and gives lectures about various aspects of quilting. She misses reading books to hundreds of children every week, but she does like having more time to quilt and more time to spend with her grandchildren this year.



## Everybody Talkin'

LaVonne Dunetts

*about our Quilt Show's Silent Auction!*

Now that your quilt show quilts are (nearly) finished, it's time to make a commitment to the Silent Auction. **We are looking for 30 finished items to sell.** These should be small, high quality fiber works that retail in the \$30-\$130 range.

Last year showed these were the items buyers wanted and

brought the best return. Either bring your donations to the meetings in April and May or let me know they will be coming before the show in June.

This project earned \$1471 at last year's show! **Let's do even better this year.**

## CHALLENGE 2012



Moonbeam, Rainbow and Sunshine

### Feelin' Groovy!

Here are the major requirements of the 2012 challenge:

1. Make an album cover based on a favorite song from the late 60's (66, 67, 68, 69, or 70)
2. 12" X 12"
3. Must have an altered fabric on the front of the quilt and a piece of the unaltered version of that fabric on the back
4. Put the name of the song, the artist and the year the song was released on the back of the quilt

5. There must be a peace symbol on the front of your quilt
6. There must be at least one bead on the front of your quilt
7. The name of the song must appear on the front of your quilt.
8. The piece must be quilted and bound.
9. Please include a brief statement about your challenge piece in your entry.

Enjoy the challenge!

## Casting Call for the Backup

### Singers and Dancers...

You do not have to audition for this or have a great singing voice — 'all you need is love' - love of a great quilt show that is.

Volunteers are special because they give of their time, their talent and their treasures. For every quilt you enter in this year's show, you are required to help a minimum of 2 hours for each quilt entered.

If you know your summer plans are taking you out of town during the quilt show, please be sure to check the pre-show volunteer assignments.

Each year, our members have identified a task or a time that they enjoy filling. Make sure your wishes and needs are known by emailing either Denise Shroyer or Elaine Seier.

#### Pre-show opportunities:

Ribbon construction  
Quilt pick up/delivery  
Frame pick up/delivery  
Quilt verification  
Judge's assistants  
Quilt transportation  
**Show Set Up**  
Frame Set Up  
Quilt Sorting  
Numbers/Sign Hangers  
Volunteer Check In.

#### Show Time

Admission Table  
Raffle Quilt  
White Gloving  
Auction Support  
Vendor Support  
Quilt Turning

#### Show Take Down

Quilt Take Down  
Catchers/Folders  
Quilt Organizers  
Frame Take Down  
Quilt Security/Checkout  
Frame Storage

## Hot Fun in the Summertime ...

### A Change is Gonna Come

Who are you, where are you, what is it that you need to hear.

What's The Worse That Could Happen if you raise your hand and say I am ready to chair the Quilt Show. (and you know you can talk your friends into

joining you on this psychedelic trip.

Aint' Know Mountain High Enough to keep the next chair/committee from making it happen.

Just like Diana Ross and the Supremes sang ..I'll Try Something New, you, too, can try something, too.

## Love Bead Contest

Remember to bring your lanyards to the April meeting for the Love Bead contest. We will vote for our 3 favorite and award prizes.

Rainbow, Moonbeam and Sunshine



Please remember that the Quilt Show Committee has set this up for electronic entry through the OQG website. Should you need assistance with the electronic entry form, please ask the Quilt Show Committee for help.

When you enter your quilt(s), remember to sign up for the required volunteer time. Thank you.

## 34th Annual Quilt Show "A Piece Rally"

### June 21-23, 2012

Complete a separate form for each item entered. Please print or type all information. Keep a copy for yourself.

ENTERED BY:	ENTRY INFORMATION
Name _____	Name of Item _____
Address _____	Maker _____
City _____ State _____ Zip _____	Owner _____
Phone _____ Cell _____	Year (s) Made _____
Email _____	Deadline for turn-in is June 8-13th 2012

**Judging:** Select all that apply  
 Item is to be **NQA JUDGED**  
 Item is for **SHOW ONLY—NOT TO BE JUDGED**

**DIMENSIONS:** (Not necessary for clothing or dolls.) Please be as accurate as possible, so we may hang your item properly!  
 \_\_\_\_\_ inches x \_\_\_\_\_ inches  
 WIDTH ACROSS (TOP) X LENGTH DOWN (SIDE)

**Box I - Entry Category: Select 1 Only**

- 1  Bed Quilt, Pieced, Hand Quilted
- 2  Bed Quilt, Pieced, Machine Quilted
- 3  Bed Quilt, Appliquéd, Hand or Machine Quilted
- 4  Bed Quilt, Mixed / Other, Hand or Machine Quilted
- 5  Bed Quilt, Kit and BOM, Hand or Machine Quilted
- 6  Wall hanging / Throw, Pieced, Hand Quilted
- 7  Wall hanging / Throw, Pieced, Machine Quilted
- 8  Wall hanging / Throw, Appliquéd, Hand Quilted
- 9  Wall hanging / Throw, Appliquéd, Machine Quilted
- 10  Wall hanging / Throw, Mixed / Other, Hand Quilted
- 11  Wall hanging / Throw, Mixed / Other, Machine Quilted
- 12  Wall hanging / Throw, Kit and BOM, Hand or MQ
- 13  Innovative Art
- 14  Crib / Baby, Hand or Machine Quilted
- 15  Miniature, Hand or Machine Quilted
- 16  Clothing
- 17  Professional, Hand Quilted
- 18  Professional, Machine Quilted, Bed Quilt
- 19  Professional, Kit and BOM, Bed Quilt
- 20  Professional, Machine Quilted, Wallhanging
- 21  Professional, Kit and BOM, Wall Quilt
- 22  Group Quilt
- 23  Other

**Box II - Quilting (Select 1)**

- 1  Machine Quilted by \_\_\_\_\_
- 2  Hand Quilted by \_\_\_\_\_
- 3  Professionally Quilted by: \_\_\_\_\_
- 4  Tied (not judged)

**Box III - Additional Categories**

- (select all that apply)
- 1  First Quilt Show Entry
  - 2  Holiday Quilt
  - 3  Scrap Quilt
  - 4  Challenge Quilt

Deadline for all Entry Forms is  
**April 10, 2012**

Deadline for turn-in is June 8-13th 2012

Forms can be turned in at Guild Meetings,  
 online or mailed to

Page Bidne  
 17620 Polk Street  
 Omaha, NE 68135-3218

Below write the DESCRIPTION of your quilt: LIMIT 60 WORDS! Please include your design source, pattern, book or class. Tell us what you want the public to know. Feel free to attach a second sheet .

---



---



---



---



---

I authorize the Omaha Quilters' Guild to use a photographic image of my quilt and the Entry information as stated above as an identifier of this quilt on their website or any public venue.

**DISCLAIMER:** In consideration of the right to participate, entrants release and discharge the Omaha Quilters Guild and all its members from all responsibility for any damage or loss that maybe suffered by their property. Please list any spots, cuts, marks, or damaged areas on your item \_\_\_\_\_ . The Show chairman reserves the right to move the item to a more appropriate judging category. The Judge reserves the right to disqualify any item not meeting published criteria.

Signed \_\_\_\_\_ Dated \_\_\_\_\_

### QUILT SHOW ENTRY INSTRUCTIONS

Please read carefully before completing entry form!! A separate form must be completed for each item entered. **PLEASE PRINT** all information. Make additional copies of the entry form as required. Completed entry forms must be received by the quilt show co-chairman no later than **April 10, 2012. DO NOT TURN IN QUILTS AT THIS TIME.** Receipt of entry form by this date allows time for the preparation of the quilt show booklet and planning of exhibits.

**ABSOLUTELY NO ENTRY FORMS WILL BE ACCEPTED AFTER APRIL 10, 2012!**

<p><b>General Information</b>          Entrant must be a paid member of the Omaha Quilters Guild. All entries must be clean, constructed of fabric and be quilted. Entries may be evaluated, at the entrant's request, by a National Quilting Association (NQA) certified judge. A MAXIMUM of 10 items may be entered for exhibition; a MAXIMUM of 3 of the 10 items may be judged. The challenge quilts do not count as one of the 3 judged entries unless you also indicate that you want this item judged by the NQA judge. Quilts should be clean, smoke and odor free. We reserve the right not to exhibit quilts that do not meet these standards. If an item is judged, entrant will receive a written evaluation form after the close of the show. Ribbon awards are given at the discretion of the judge.          Items which have been exhibited or judged in a previous Omaha Quilters Guild show may not be entered. All entries to be JUDGED must be the work of the entrant, EXCEPT in the case of professionally quilted quilts and group quilts. Only items quilted by OQG members are eligible for the Best of Show award. Items which are not the work of the entrant may be entered for exhibit only.          The judge reserves the right to disqualify any item not meeting published criteria. No special hanging or handling will be allowed. If you wish to make comments to the judge, they should answer questions regarding the technique, and need to be attached to the entry form. (Make a copy for yourself.)</p>	<h3>Quilt Turn in June 8-13, 2012</h3>
<p><b>Description of Technique</b>  <b>Pieced:</b> Entry contains hand or machine piecing. Small amount of other techniques permitted.  <b>Appliquéd:</b> Entry contains hand or machine appliquéd. Small amount of other techniques permitted.  <b>Mixed:</b> Entry is constructed using a substantial amount of two or more techniques, such as appliquéd and piecing. It doesn't include quilting and trapunto. Please describe technique.  <b>Kit and BOM:</b> Where fabric and patterns are specified and sold as a package. If you select the fabric it is NOT considered Kit or BOM.  <b>Other:</b> Entry is constructed using one special technique such as whole cloth, stenciled, shadow, appliquéd, embroidered etc. Please describe technique.</p>	<p><b>Box 1-Entry Category: Select 1</b>          All entries will be exhibited and/or judged by category. Each entry can be entered in ONLY ONE category. Quilt show chairman reserves the right to move entries to a more appropriate category for judging.  <b>Bed Quilt:</b> Quilt intended for use on a bed. The minimum size is 60" wide x 72" long and is generally traditional.  <b>Wall Quilts/Throws:</b> Quilt intended for wall display or use as a throw and is generally traditional.  <b>Innovative Art:</b> A unique and/or original interpretation (any size).  <b>Crib/Baby Quilt:</b> Quilt intended for use by a baby or child.  <b>Miniature:</b> Small version of a large quilt. It must be in scale. Maximum size is 24" by 24".  <b>Clothing:</b> Any pieced or appliquéd, and quilted, garment.  <b>Professional Quilted:</b> Quilted by a professional for hire, by hand or by machine. Write the name of the company (or individual) on the entry form in the appropriate space.  <b>Group Quilt:</b> The entry is made by two or more people. Entry must be made under the name of the owner OR the name of the individual in charge of the project. This category does not include professional (for hire) quilted quilts.  <b>Other:</b> Dolls, tablecloth, tree skirt, totes, crazy quilts etc. Please describe item in appropriate space on the entry form. Note: Dolls will not be judged.</p> <p><b>Box 2- Quilting: Select 1 and fill in the name of quilter</b>  <b>Machine Quilted:</b> Entry contains machine quilting and may include some hand quilting.  <b>Hand Quilted:</b> Must be quilted entirely by hand.  <b>Professionally Quilted:</b> Quilter was paid to quilt by hand or machine.</p> <p><b>Box 3-Additional Information: Check All that apply</b>  <b>First Quilt Show Entry:</b> First Quilt Show Entry (ever).  <b>Holiday Theme:</b> Entry represents holiday theme ( Christmas, Halloween, etc.)  <b>Scrap Quilt:</b> Must contain a minimum of 50 different fabrics, excluding backing fabric(s).  <b>Challenge:</b> The size is 12" by 12". You must have an altered fabric on the front (painted, dyed, scrunched, etc.) and the original fabric somewhere on the back. The front must contain the title of the song (any font or style). The back must have the artist and the year. The song must be from the years 66, 67, 68, 69, or 70. You must have a peace symbol somewhere on the quilt. You must have at least one bead on the quilt. It must be quilted and finished. Include a paragraph explaining your connection to the song and your memories.</p> <p style="text-align: center;"><b>REMEMBER TO SIGN AND DATE THE FORM AND KEEP A COPY FOR YOURSELF!</b></p>



## Membership

Chairperson Brenda Reid

**CREATE YOUR OWN BADGE AND INCREASE YOUR OPPORTUNITY TO WIN A COOL DOOR PRIZE AT THE GENERAL MEETING!**

Making your own name tag gives you an opportunity to tell more about **YOU**- what kind of quilter are you?

Love the rich tradition of quilting?

Exploring fiber art?

Just wild about batiks?

Or just a wild crazy quilter?

How about a name tag that works with the quilt show theme, A Piece Rally?

**Come on, tell us who you are!**

There were so many positive comments about the switch back to members wearing name tags they have made, that their small group wears, or to show a previously held guild position. It was great to see quilters show off their style!

We will use the member list with the months in columns – just check yourself in when you arrive for meetings. People commented on how easy it was to see if someone was already at the meeting or not. At the March meeting, we had 115 members, 51 members wore name tags, 2 new members, and 3 guests. **When you see someone new at our meetings, please take a moment to welcome them to the guild. A smile is a great ice breaker!**



## Rising Stars

Chairperson Carla Toczek

Remember, 6pm before the general meeting!

***"You have a stash, I have a stash, we ALL have a stash."***

A lot of that fabric is begging for a project, but some of it may need a new home.... and the weather's perfect for pruning. **What to do?**

Join us in April for an answer when Jackie Heyne of A Quilting Place will introduce her new business called "Stashbusters." In addition, I'll have a stash-busting pattern sheet for you. **Hope to see everyone!**



## Camp Wannamakeablankie

Chairperson Cheri Vossberg

***"Save the Date for Camp Wannamakeablankie"***

The 2012 camp dates are **Friday Oct. 19 through Sunday Oct. 21** at Camp Carol Joy Holling in Ashland.

Please see the full article on page 10.

**Mark your calendars and make plans with your quilting friends to get together for great quilting camp experience!**

## QUILT MAGICK

Headmistress Pat Varner



Do you know someone attending their first QuiltNebraska 2012 or who would like too? This is a reminder that from an unknown donor, full tuition that is the registration fee (not including hotel stay) is available for one lucky first timer. Please forward that name to me by April 1, 2012 and a drawing will be held and announced to one very lucky quilt wizard! No nomination needed, just a name. If you have any questions, contact me privately.

Headmistress Pat Varner



Quilt Magick,  
QNE 2012

## Block Exchange

Chairperson Andy Laugel

### About Block Exchange

Any member of the Omaha Quilters' Guild is free to participate in Block Exchange, either for the whole year or on a block by block basis.

Patterns are available on our web page and are passed out at the general guild meetings with a piece of focus fabric. You must turn in a completed block in order to enter the drawing for a set of blocks that will be awarded during the meeting, but you don't have to enter the drawing if you don't want to.

Feel free to stop at the Block Exchange table at the general meetings and talk to us if you have any questions.

Andy Laugel  
Janette Podwinski  
Mary Schnitker



## Susie Says .... What if ....?

What if money was no object and location not an issue.... how would you answer these questions?

Teacher that I would love to take a class from would be \_\_\_\_\_

Topic that I would love to take a class on would have to be \_\_\_\_\_.

I have always wanted to learn \_\_\_\_\_.

I would like to improve my skills in \_\_\_\_\_.

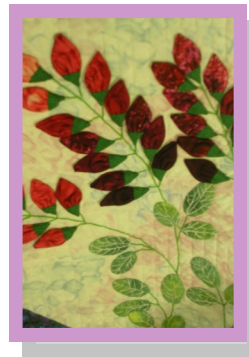
Please take a moment and respond I would love to hear YOUR thoughts

I am using the generic term of quilter, so when you think about what you like to do, how do you describe yourself?

For instance, I love hand applique, but machine piece. I also love crazy quilting. I definitely love the process and love to learn new things. I am happy to have my "TOPS" done (kinda procrastinate on the final step) I would love to be able to do it all, just really prefer the fun of working on the project.

**What about you?**

**Purple, Red and Green CAN** work together according to Cindy Erickson, member of our OQG Guild, national quilt show judge, teacher, quilter, designer and the list goes on. Cindy stepped into the role of motivational speaker at our March General Meeting with a presentation of featuring her work past and present. **Thanks so much!**



## Block Exchange

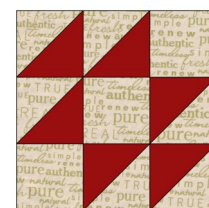
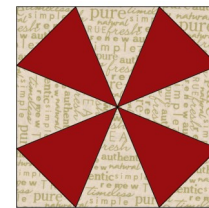
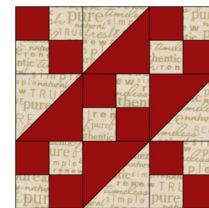
Any member is welcome to participate in Block Exchange, whether for just one block or for the whole year. If you didn't pick up a kit at the last meeting, instructions are available off the webpage. While we do provide a focus fabric to ensure some uniformity between blocks, you are free to replace it with something similar as needed.

I'd like to thank everyone who made blocks for us this year. At our February meeting, we received enough blocks to hand out two sets of Kaleidoscope blocks. Rita Haverman and Darlene Maurer were the lucky winners.

In March, we received 20 Kindergarten blocks. Jennifer Sutton and Ruth Gregg won a set of 10 blocks each. We look forward to seeing your Road to California blocks turned in at the April meeting.

Andy Laugel,  
Jeanette Podwinski  
& Mary Schnitker

**Chairperson Andy Laugel**



## Golden Thimble Award



**Now is the time of year to be thinking about who you would like to see honored in the Omaha Quilters Guild with the Golden Thimble Award.**

The nominee must be a current OQG member and have made an outstanding contribution in one or more of the following areas: Leadership, Community Outreach or service in the name of OQG, and/or Contribution to the Quilting Community.

Golden Thimble Award nominations are due April 15, 2012. The award will be given

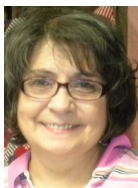
based on merit not as a popularity contest or greatest number of nominations. The award will be presented at the May meeting.

**Please send all letters of nomination to:**

Dee Acklie  
10922 Hascall St.  
Omaha, NE 68144  
[dee@acklie.net](mailto:dee@acklie.net)

Golden Thimble Award  
Committee

Dee Acklie, Jane Fiala, and  
Elizabeth Kannedy



## Helping Hands Committee

Hello Everyone!

What do you think the pattern would look like if you took the "Churn Dash" block — enlarged it, made it then cut the block into fourths and you can only use two prints of fabrics?

Come to Guild on April 10 and check it out! We will have kits for you to take home and sew together.

Helping Hands needs a hand (or two). Let's give the Helping Hands Regulars a break away from their table at the Guild meeting. Angie and her committee are always looking for "Helpers" behind the tables before meeting for as little as 30 minutes. Let's give the regulars a break.

If you have a pattern you want to share. Bring a copy to Helping Hands table.

In May the Eastern Nebraska on Aging "Respite Care" is having dinner. If you would like to attend please bring a mailing address label to Helping Hands table. How many "Caregivers" do you think belong and are active members of the guild? More than you and I think there are in the guild. If you have a top at home please drop it off at guild.

**Chairperson Angie Reed**

Stay safe.  
Enjoy the nice weather.

Chairperson  
Helping Hands  
Angie Reed  
[402-651-6593](tel:402-651-6593)

On April 3, 17 and 24, 2012 Helping Hands will be meeting at Millard Library. Helping Hands will not be meeting at South Omaha Library in April.

Updated: 3/6/2012

Fiscal Year July 1, 2011 to June 30, 2012

Category/Account Name	BUDGET	YTD	BUDGET	YTD	Difference
	Projected	Income Actual	Proposed	Expense Actual	
BLOCK EXCHANGE					
BUS TOUR			\$ 100.00		
CHILDRENS EMERGENCY FUND (CEF)	\$ 1,800.00	2,125.75	\$ 1,800.00	(2,110.75)	15.00
COMMUNITY CONNECTIONS		12,492.24	\$ 60.00	(12,380.14)	112.10
QUILTS OF VALOR			\$ 500.00	(243.55)	
HOME OF THE BRAVE			\$ 250.00		
HOSPICE			\$ 125.00	(85.19)	
EXECUTIVE BOARD			\$ 125.00		
Capital			\$ 500.00	(436.85)	
Fixed			\$ 1,500.00	(376.50)	
Grants			\$ 5,665.00	(3,515.00)	
Interest - Certificates of Deposits					
Interest - Checking	\$ 300.00	284.00			
Ways & Means (Gifts & Donations)		10.68			
FALL RETREAT		100.00			
FUND RAISING QUILT	\$ 14,000.00	13,682.00	\$ 14,000.00	(13,193.80)	488.20
HELPING HANDS	\$ 4,000.00	1,933.00	\$ 1,000.00	(1,094.04)	838.96
HISTORIAN		250.00	\$ 500.00	(368.92)	(118.92)
LIBRARY			\$ 50.00		
MEMBERSHIP (370 x \$35)			\$ 50.00		
Membership Book (Printing & Postage)	\$ 12,950.00	10,858.50			
Newsletter (Printing, Postage & Software)			\$ 1,250.00	(1,118.50)	
PAST PRES GOLDEN THIMBLE AWARD			\$ 1,500.00	(1,144.30)	8,595.70
PROGRAMS	\$ 465.00	465.00	\$ 465.00	(370.97)	94.03
Classes	\$ 10,000.00		\$ 15,000.00		
Speakers - OQG General Meeting		1,132.00		(1,372.57)	
Holiday Party				(359.40)	
QUILT SHOW		3,664.00		(5,363.56)	
CDs	\$ 26,000.00		\$ 24,000.00		
Insurance					
Other			\$ 500.00		
Vendor		320.00		(655.71)	
RISING STARS		3,962.50		(475.15)	
SMALL GROUP					
SPRING FLING RETREAT					
STATE FAIR AWARDS	\$ 3,775.00	3,775.00	\$ 3,775.00	(3,698.56)	76.44
WEBSITE			\$ 75.00	(75.00)	
		21.17	\$ 500.00	(300.00)	
<b>TOTALS</b>	<b>\$ 73,290.00</b>	<b>\$ 55,075.84</b>	<b>\$ 73,290.00</b>	<b>\$ (48,738.46)</b>	



Our bank will no longer accept checks for the Omaha Quilters Guild unless it is written specifically to the OQG/Omaha Quilters Guild.

Please make a mental note when writing your check for classes, retreats, membership, etc. . . . — it MUST be written to OQG (or you can write out the full name) they will not accept checks for deposit written to a specific individual. Not following this may cause issues for classes, retreats, etc.

Thanks in advance for your attention to this detail...please share with other members. We will be sure to include this at the meeting Tuesday and in the newsletter.

**QUILTERS' HOROSCOPE**

**Taurus** – April 21 to May 20



Taurus is the quilter who always finishes a project, as they are persistent and determined.

When attending workshops or using a pattern they will follow every instruction to the letter. They can be greedy when it comes to their stash, as they know the value of material. They save every bit of scrap. However, they are warmhearted and loving to such a degree that they have given away nearly every quilt they have ever made.

They are gifted artists, excelling at sewing, patchwork and quilting. The stitching in their quilts is of such high quality that their quilts will endure for eons.

**HAPPY BIRTHDAY**  
to our members  
who are celebrating their  
special day in  
**APRIL!!**



Do you know a member who has experienced an illness or suffered a loss; please send an email to Jan Mitchell at csecretary@omahaquiltersguild.org and let her know.

**OMAHA QUILTERS' GUILD BOARD MEETING**

**March 6, 2012**

**Lutheran Church of the Master**

**Board Meeting Minutes**

President Susie Jarosz opened the meeting at 7:00 pm.

Attendees: Corinne Mittag, Judy Sellers, Denise Shroyer, Linda Holman, Jan Fry, Andy Laugel, Mary Cave, Rita Matthews, Lorraine Fitzgerald, Cindy Erickson, Brenda Reid, Denise O'Toole, Elaine Seier, Andrea Chakvararti, and Cheri Vossberg.

**COMMITTEE REPORTS:**

**Nominating Committee:** Corinne Mittag reported that they have met; and are still open for some possible candidates.

**Quilt Show:** Jan Fry presented the Quilt Register's ad for Nebraska, and are looking into posting in the Iowa version. Publicity has been delivered to the area quilt shops; and is available in posters and book marks for any one to pick up. Their next meeting will be March 24<sup>th</sup> from 9 am to 12 pm. 13 vender contracts have been signed, and deposits are starting to come in. Two adjacent rooms will be used for bed turning and demonstrations. Kate Eelkema has been chosen as the show judge, and has signed her contract. An article about her will be posted. Enough lanyards have been made.

**Spring Fling:** Jan Fry reported that 31 attended and enjoyed themselves.

**Librarian:** Tania Uram, unable to attend, but had a report that books will be for sale at both the April and May meetings, and she is in the process of selecting them. An anonymous member brought in many boxes of magazines, and there are still many to go through with numerous ways to share.

**Programs:** Judy Sellers reported

that no one has signed up for Mary Ann Kelmer's classes. Discussion was held if it is economically feasible to have her travel from Illinois just for the lecture. Judy contacted her, and the decision was made to cancel Mrs. Kelmer's lecture. The hotel rooms for the classes will be also canceled. Instead, Cindy Erickson will step in to lecture on Sampler Quilts and their Settings. Discussion was held on ways to develop ideas upcoming programs.

**Treasurer:** Denise Shroyer reported all past due funds have been caught up.

**Block Exchange:** Andy Laugel said they are ready to go forward with the next block.

**Community Connections:** Mary Cave needs 30 more fall color blocks in order to complete the fall quilt. Also no more Hobbs labels are needed.

**Long Range Planning:** Cindy Erickson is in the process of obtaining the NQA's policies and procedures.

**Membership:** Brenda Reid has received emails from members being enthusiastic about wearing their homemade name tags. Next week's meeting will have a check off list in place of the labels. The membership application form will be updated for next year's enrollment to start in May.

**Membership Data Base:** Denise O'Toole reported of 315 members.

**Newsletter:** Elaine Seier reported that the deadline for articles is March 16<sup>th</sup>. There is still some concern as the cost of printing and mailing the newsletter may go over the projected budgeted amount.

**Helping Hands:** Rita Matthews reported that they look forward to completed quilts being returned of those that were taken out to be finished. Their

next meeting will be at the South Omaha Library by the Metro campus.

**Properties:** Andrea Chakravarti reported the Westside Community Center needs to know in advance if the LCD projector is needed for our meetings.

**Rising Stars:** Carla Toczek, not present, will have Diane Thomas speak about labels for the quilt.

**Webmaster:** Andy Laugel reported that the registration form for the quilt show is now up.

**Camp Wannamakablankie:** Cheri Vossberg, newly taking over the chairman position, presented the proposed application for next fall's retreat and discussed with the board about the fees for Fall 2012, and then for 2013; since they reserve our spot in a two year time span.

The meeting adjourned at 8:25 pm. Next meeting will be April 3, 2012.

Respectfully Submitted,

Linda Holman  
Recording Secretary

---

**OMAHA QUILTERS' GUILD MEETING**

**March 13, 2012**

**Westside Community Center**

Susie Jarosz opened the meeting at 7:00 pm.

Judy Sellers of Programs informed members that the scheduled lecturer, Mary Ann Kelmer, was canceled due to lack of interest for her workshops and non feasibility of travel expenses. Cindy Erickson spoke on Sampler Quilts and Their Settings, had questions and answers, and followed up with show and tell from her students.



**OMAHA QUILTERS' GUILD  
GENERAL MEETING  
continued**

**GUESTS:**

Pat Varner and Thimble Threads Academy (Diane Thomas, Peg Pennell, LaVonne Dunetts, Dee Acklee, and Terri Caffrey) presented the Nebraska State Guild's upcoming show, Quilt Magic.

Nellie, a representative from Shakespeare on the Green requests 5 quilts to be made by our guild members, to be utilized for their event from June 21<sup>st</sup> to July 8<sup>th</sup>.

**BUSINESS MEETING:**

Minutes from the February meeting were approved as published.

**Nominating Committee:** Corrine Mittag reported the list of proposed officers for the 2012 to 2013 board to include: Corrine as President, Carla Toczek as President Elect, Judy Sellers as Vice President of Programs, Connie Pratt as Corresponding Secretary, Linda Holman as Recording Secretary, Denise Shroyer as Treasurer, and Elaine Seier as Newsletter Editor.

**Quilts of Valor:** Sandy Pihlgren reported that the quilts made her locally go to Iowa and Nebraska veterans. They meet on the fourth Saturday of the month from 10 am to 4 pm at a quilting place.

**Helping Hands:** Angie Reed reported that they will meet on March 20<sup>th</sup> at the Millard Library and March 27<sup>th</sup> at the South Omaha Library. Also the Tuesday in July they will have at the South Omaha Library the 8 hour quilting session, will be able to include students from Omaha South High School.

**National Quilt Day,** reported Peg Pennell will be held at the Quilt Study Center in Lincoln.

**Camp Wannamakablankie:** Cheri Vossberg reported that starting March 15<sup>th</sup> they will be taking reservations for the fall retreat.

**Nebraska State Guild:** LaVonne Donetts reported there will be a gathering on March 31<sup>st</sup>. Also membership forms for the state

guild are available.

**Block Exchange:** Andy Laugel had 20 blocks turned in and had 2 winners, each getting 10 blocks.

**Hospice:** Judy Unrein showed 2 quilts made from donated fabrics, needing quilters.

**Golden Thimble Award:** Dee Acklee reported that they are looking for nominees of past presidents for this award.

**Corresponding Secretary:** Jan Mitchell was contacted by a gentleman, who's wife was a quilter, and had fabric plus old dolls, any one interested could contact her.

**Home of the Brave:** Melinda Armstrong reported that at present 77 soldiers from our area died in Iraq or Afghanistan, and then there are 118 soldiers with Nebraska ties. They still need blocks pieced, quilts assembled and quilted, and quilt moms. A notebook has been compiled of information about quilts that we all have made.

**Quilt Show:** Jan Fry reported that the quilt registration forms will be online and in the printed newsletter, and publicity is out there. LaVonne Dunetts will be conducting the Silent Auction and would like those contributing to let her know. Elaine Seier and Denise Shroyer have the volunteer sign up sheets available. Those entering a quilt must sign up for a two hour shift.

**Programs:** Judy Sellers reported that there are free magazines for any one who would like them. April's speaker, Sue Benner's class is full, with a waiting list. Supplies list will be on the website.

**Membership:** Brenda Reid reported that there were 115 attendees, and 51 had their own name tags. Also there were 2 new members and 3 guests. Door prizes were handed out.

Show and Tell, after which the meeting adjourned at 8:58 pm.

Respectfully Submitted,  
Linda Holman  
Recording Secretary

**A message from LaVonne Dunetts**

**2012 Nebraska State Fair Information**

Spring Greetings! You may think it is way too early to think about the 2012 Nebraska State Fair Quilt Show, but I assure you – it will be here soon. We want you to start thinking now about **additions** being made to the State Fair Entry Book. Also – Please put these **dates** on your calendar and Please, Please be a **volunteer** to make this the best Nebraska State Fair Quilt Show ever!

**Aug. 24-Sept. 3**

**Nebraska State Fair Quilt Show – Grand Island, Nebraska**  
Entry deadline: Aug. 8. Quilt receiving dates: Aug. 15 and 16. Check the web site at [www.statefair.org](http://www.statefair.org) for updated information.

**2012 Nebraska State Fair News**

We are adding 4 new competition classes and 5 new special contests to the existing 70 competition classes and 18 special contests from last year.

The new classes are: a quilt from recycled components (i.e. old quilt blocks/tops or fabric or item originally designated for a purpose other than a quilt), a doll quilt class for adults (this is in addition to the two doll quilt classes for youth) and two additional Senior Adult classes (a throw quilt size and a bed quilt, mixed techniques).

The new special contests are: Best Scrappy Quilt, Best Humorous Quilt, Best Blue & White Quilt, Best Quilt from Southwest Nebraska Counties (Red Willow, Hitchcock, Dundy, Chase, Frontier & Hayes), and the Diamond Award to the best bed quilt in the Senior Adult classes made by someone 75 or over.

**Can you help with White Gloving?** We will need about 240 white glove workers during the eleven days of the State Fair from Aug. 24 through Sept. 3. There are three shifts per day: 9am-1pm, 1pm-5pm, and 5pm-9pm. Consider getting a group from your local guild to car pool, white glove and then see the rest of the wonderful fair. You will receive a free entry ticket to the fair on the day you work. White glove workers do not need to be members of NSQG so encourage your friends to join you. The white glove chairman for 2012 is Susan Smith, 1004 W. 7th, Grand Island, NE 68801, 308-383-3042 [susan\\_smith5544@hotmail.com](mailto:susan_smith5544@hotmail.com) Please contact her with your name, address, email, phone number and preferred dates and times you can help.

Check the Nebraska State Fair web site for updates on the 2012 Entry Book (available around May 1) and other information: [www.statefair.org](http://www.statefair.org). We encourage guilds to carpool their entries to and from the fair.

Jan Sittler  
2012 Nebraska State Fair  
Quilt Show Superintendent



*Omaha Quilters' Guild Mailing Address*  
 PO Box 24614  
 Omaha, NE 68124-4614

*The OQG meets on the 2nd Tuesday  
 of each month September through May,  
 at the Westside Community Center,  
 3534 S 108th Street,  
 Omaha, Nebraska at 7 pm.  
 Rising Stars will meet at the January  
 meeting.*

**Visit us on the web!**

**[www.omahaquiltersguild.org](http://www.omahaquiltersguild.org)**

**2011-2012 OQG Officers**

President	Susie Jarosz
President-Elect	Corrine Mittag
VP Programs	Judy Sellers
Corresponding Secretary	Jan Mitchell
Treasurer	Denise Shroyer
Recording Secretary	Linda Holman
Advisor	LaVonne Dunettes



Thank you to our newsletter article contributors, our proofers, our printer, Bob Botsios at Sir Speedy, and Denise for providing the membership list.

The newsletter is sent via electronic mail and for those without email, through the mail.

If you are not receiving the newsletter either electronically or through the mail, please let me know. My email address is [newsletter@omahaquiltersguild.org](mailto:newsletter@omahaquiltersguild.org)

Elaine Seier, Newsletter Editor.

## Camp Wannamakeablankie

Camp Director—Cheri Vossberg

The information and registration forms are now up on the OQG website, so get your sewing friends together and come join us for a weekend retreat at beautiful Camp Carol Joy Holling near Ashland, NE, on Friday through Sunday Oct. 19 -21.

The weekend will include lots of time to finish your sewing projects while visiting with old friends and making new ones. The setting is in a hotel atmosphere with your own room and bath, with rates based on the number of persons per room. On the lower floor there is a large area for sewing machines, ironing boards, etc. where you can sew at any time of the day or night. Meals are provided for Friday's dinner, all meals on Saturday, and breakfast and lunch on Sunday.

Your weekend room and board are included in the registration fee. Saturday evening there will be a campfire with samores! For those of you who don't want to miss your favorite college game on Saturday, there is also a TV room. Registrations will be taken until August 1, 2012 or

until the camp has filled. If you have any questions, please contact Cheri V o s s b e r g a t [camp@omahaquiltersguild.org](mailto:camp@omahaquiltersguild.org) or [cherivossberg@hotmail.com](mailto:cherivossberg@hotmail.com) .

Please send Cheri your registration form with a check payable to **OQG** for your camp fee. At least half the total rate must be sent in as a deposit, with remaining half due by August 1, 2012. There will be no refunds after August 1, 2012. Rates for the camp are as follows:

- 1 per room - \$274 single occupancy (please pay \$137 deposit or \$274)
- 2 per room - \$216 per person (please pay \$108 deposit or \$216)
- 3 per room - \$190 per person (please pay \$95 deposit or \$190)
- 4 per room - \$168 per person (please pay \$84 deposit or \$168)
- 5 per room - \$146 per person (please pay \$73 deposit or \$146)

*Your opportunity to take*

*on an active role in  
 our Guild is here!*

*The Guild needs*

***YOU!***

***Thanks!***



*Please check your email's 'junk drawer' if you are not receiving your newsletter and you know you have requested it to be sent electronically.*

*Sometimes we are mistaken as spam and that sends our newsletter to an 'alternate universe on the internet'.*

*If you want to confirm how your address is listed, please send an email to the me and I will be happy to research the problem on this end.*

