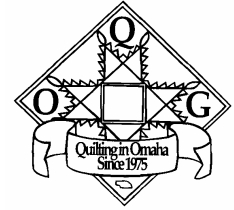




The Official Publication of the Omaha Quilters' Guild

Omaha Quilters' Guild
www.omahaquiltersguild.org



September 2010

Next Newsletter
Deadline:
Sept 21, 2010

Next OQG meeting: Tuesday, September 14, 2010

Email Elizabeth Kannedy at oqgnewsletter@yahoo.com or mail to: 13308 South 33rd Street, Bellevue, NE 68123-2369

INSIDE THIS ISSUE

Membership	2
Community Connections	2
Bus Trip	2
2010 Opportunity Quilt	3
2011 OQG Quilt Show	3
Children's Emergency Fund	3
CEF continued	4
Helping Hands	4
Hospice House Quilts	4
Rising Stars	4
5/11 Meeting Minutes	5
8/10 Board Meeting Minutes	5
Quilts of Valor	5
OQG Income Statement	6
Camp Wannamakeablankie	7
Spring Fling Retreat	7
Opera for the Cure	7
New Quilt Show	8
New Quilt Show continued	9
Quilt NE 2012	9
Block Exchange	9
Block Exch Instructions	10

**OQG
Board Meeting
September 7, 2010
7 pm
Lutheran Church
of the Master**

September Program

In September we will be celebrating the birthday of the Omaha Quilters' Guild, and just like most people over the age of 30 we won't be discussing how old the guild actually is, because then many of our charter members must have been still in middle school when they joined. We will be serving cookies before the meeting while you have a chance to visit with old friends and meet a few new members of the guild.

Our program will be hosted

by members of several of the small groups in the guild. They will be sharing things that their group does when they meet. Several groups have been meeting for several decades and some are newer groups. Ruth Christensen who is in charge of small groups will be at a table after the meeting to begin helping members who are not in a small group yet together and form new ones. The programs promises to give all group some ideas of things they might want to add to their group during the

year.

Our own, Cindy Erickson will be teaching "Christmas Pickle Dish" on Sunday afternoon, September 26 at Country Inn and Suites on 120th and Miami. The class will begin at noon and last until 6:30. It is currently full, but we will take names for a waiting list.

Show and Tell will follow the meeting and we hope to see lots of quilts that were created this last summer.

Carol McCann

President's Notes

Welcome to a new quilting year!

I hope you had quality time with your fabric and thread over the summer and will share some of them with us at Show-and-Tell. I'll be bringing my finished quilt from QuiltNebraska to show off.

I'm excited to hear about what our small groups do when they meet at our September Birthday meeting. You'll get a chance to take ideas back to your own group or have an opportu-

nity to form new groups.

Please join me in welcoming the Nebraska State Quilt Guild quilt mom, Vicky Skuodas along with quiltmaker Bonnie Kucera to our meeting. I know you'll make them welcome. You will have an opportunity to purchase tickets for the wonderful State Guild raffle quilt. Bonnie and Vicky expect all the tickets to be gone before we have the quilt back for our show next June, so this may be your only chance to buy them.

You still have time to visit the State Fair. I can't wait to see the new quilt exhibition space at Fonner Park in Grand Island. The Fair closes on Sept. 6th at 7 pm. Go to www.statefair.org. I look forward to it all year.

Threads Across Nebraska will also be in Grand Island. It's at the Midtown Holiday Inn on October 1 & 2 and features quilts from all over the State plus a vendor mall of 37 great places to shop.

LaVonne Dunetts



Membership

A friendly reminder, membership dues for 2010-2011 are due. If you want your name to be included in the membership booklet, please have your dues paid no later than the September meeting.

A membership form may be downloaded from the OQG website. You may mail the

form to Denise O'Toole or turn it in at the September meeting.

If you have paid your dues, there will be a sticker with your name printed for you to wear as a name badge. Prize tickets will be given to those wearing a name badge. We will accept any prizes you

wish to contribute (gently used books, patterns, notions or fabric packs). Please bring these to the membership table.

You may also sign up at the membership table to be a quilt holder and folder.

Pat Stava Membership Chair



Community Connections

Several community events this summer were supplied with quilts from OQG.

On July 30, 2010, The Heart of My Heart wall hanging, quilted by Mary Cave, earned \$400.00 for The Ribbon Foundation.

One Drake Place Salon & Day Spa will use these funds to provide hair prosthesis services, at no cost, to anyone with cancer.



On August 14, 2010, Jennie Edmundson Hospital honored three Spirit of Courage recipients. Our own Karen Krause was honored at this event. Another "Heart of My Heart" quilt, quilted by Mary Cave, was donated. A very special touch was that Karen's own signature block was in that quilt.

The quilt was purchased to be displayed in the Breast Health Center at the hospital and brought \$285.00 at the auction.

Visit www.spiritofcourage.org to read all about the event.

submitted by

Kathy Havranek



Squirrely Bus Trip



Saturday, October 9 we will be headed to Des Moines for the AQS show.

The bus is full but I'm happy to put names on the waiting list.

We will depart from the College of St. Mary parking lot on the Mercy Road side of campus.

The bus will depart at 6:30. I am asking the driver to arrive to begin loading at 6:00.

Yes, that's early but we have found from experience that we really need the entire day if we expect to see all the quilts and shop all the vendors.

Don't be late, we do leave people behind.

Kathy Havranek has ar-

ranged for us to each receive a tote bag. Please try to attend the September meeting in order to pick up your bag. I'm trying very hard to reduce the amount of items that I have to bring the day of the trip.

Susan Russell has offered to bring everyone a bagel and cream cheese! Yum!

We can have breakfast and then catch a couple hours more sleep and arrive all rested and ready to see spectacular quilts!

If you have not paid the re-

maining balance of your fees, please do so immediately.

Questions, comments, concerns, contact Jan Fry.



2010 Opportunity Quilt

Harriet Hagedorn's "Everlasting Beauty", 2010

Opportunity Quilt was won by Benay Derr who is work-

ing on designing her own quilts and is thrilled to own

this work of art.

Kathy Havranek

2011 Quilt Show

The 33rd Annual Omaha Quilters Guild Show will be returning to the beautiful LaVista Conference Center June 23, 24, and 25, 2011. We are keeping the show theme and challenge under wraps a bit longer while we put the finishing touches on our plans but we'll unveil them soon enough and we think that you'll be as excited as we are.

Your chairmen for the 2011 show are Betty Harmsen, Karen Eveans and Jan Fry. Betty is a past show chair as am I. Karen has served the guild on various committees but recently has been serving from Lincoln. You may not see her at as many of the meetings as you do Betty and I but she is working hard for you seen or not.

If you went running for your calendars to write down these very important dates (and we hope that you did),

you've discovered that June 23 is a Thursday and the 25th is a Saturday and you're probably wondering if I've gotten my dates wrong. Our show has always run Friday, Saturday and Sunday. This is the first of several changes that we have had to make in order to afford our dream location. We are dropping Sunday hours in 2011. After carefully studying attendance numbers and looking over budgets, the board has determined that this decision is in the Guild's best interests. We hope to make up the lost attendance by opening the show to the public on Thursday evening, probably around 5 pm. We know that setup is a challenging day but the show went up in record time this year and we are confident that we can be open and ready for the public by 5 pm. We have not presently

decided what to do about Members Preview Night. There are aspects of that event that we would like to keep but the original need that caused us to implement the preview are no longer an issue. The other major concern will be takedown on Sat. evening. We hope that each of you will make a commitment to support your guild's major fundraising activity of the year and set this ENTIRE weekend aside to help its show be a success. The revenue that the show generates helps the guild afford meeting space and do all the marvelous work that it does throughout the year. The show is our one big opportunity to show the world the amazing work that is being done by our members. We know that some of you will have weddings or family reunions but we've given you the 2011

dates early enough that we hope you will try and make your guild's show a priority event in your life and on your calendar.

Dropping the Sunday hours and what to do about the Members Night Preview will not be the only tough decisions that your show team will have to make. We hope that you will be supportive and understand that our motivations are always the Guild's best interests. The best way to feel like these decisions are in the Guild's best interests is to be a part of the decision making process and you can do that by getting involved in your 2011 show. To volunteer, please contact one of the chairmen and tell us what job you would like to do to make the 2011 show a smashing success. An adventure awaits!

Jan, Betty and Karen

Children's Emergency Fund Project

Some children in foster care are fortunate to be placed with families who are able to provide generously at Christmas time. But it was apparent that other children were left out during the holidays. The Omaha Quilters' Guild became aware of the need and in 1992, created the Children's Emergency Fund. Originally, the project focused on sewing Christmas stockings but has since grown into a multi-faceted, annual event. There are four ways for members

to participate in the project.

Stocking Challenge: At our September meeting, members line up to get their \$2.00 kit for the stocking challenge. All the completed stockings are then displayed, at our December Banquet where members vote on the stockings by monetary donation. A small prize is given for the 24 stockings that raise the most money. All the stockings and the monies raised



are donated to Child Protective Services (CPS)

Angel Bags: An empty stocking isn't much fun, so we ask the members for donations of stocking stuffers. This part of the project is referred to as the Angel Bag Project. Members pick up a bag at the November meeting, and then they put new, unwrapped gifts in the bag and return it to the December



meeting. CPS caseworkers select stockings and stuffers which they then deliver to children who are in foster care, shelters, or hospitals.

Santa's Workshop: Members make and donate items to be raffled, and those are raffled at the December Banquet. Thanks to generous members, we usually have over 150 items!



(continued on page 4)

Children's Emergency Fund Project continued:

Caring Friends Auction:

We also have a project created specifically for members to work together. This part of the fund-raiser is called the Caring Friends Auction. Each year there is a theme, and quilters may make any item they believe reflects the theme. The only

rule is that the item be made by at least two people, and have some quilting somewhere on the project. The items are then auctioned during the December Banquet and proceeds benefit CPS. This year's theme is red and white stripes. The item must have red and

white stripes visible on the front. The stripes can be pieced, appliquéd or a print in the fabric.

You can see why our December meeting is one of the highlights of the year as members enjoy good food, good friends and a feeling of

well-being. It's a great reward to use our talents and enthusiasm for such a meaningful cause. We are reminded that working together we can do so much to brighten the life of a child.

Pat Sears

Helping Hands

Welcome back! I hope everyone had a cool and safe summer. We are looking forward to a new year!

Helping Hands extended our latest contest until March 2011. Rules? Go through your fabric stash and look for a yard or more of fabric that makes you ask yourself, "how did this fabric get here?" Bring the fabric to the September Guild meeting and swap it for another.

Then working from your stash, create a top or complete a quilt using the new fabric.

Helping Hands will continue to have kits available at guild meetings. Feel free to pick up as many as you like. Some of the kits will contain top/batting/backing. We will also have kits that will contain just fabric and instructions. All you have to do is sew the kit into a top. When

returning the top it is up to you if you want to contribute backing fabric and binding. It is okay to only return the top.

Helping Hands will also have quilts that just need the binding sewn on.

Want to practice your quilting? You can pick-up tops and backing to practice with. Let me know if you only want finished tops. We have batting on the roll to help

finish the tops. The batting will only have one seam. The batting and backing fabric will be 3 to 6 inches larger than the top.

Please, feel free to ask questions about Helping Hands and our projects.

Chairperson
Helping Hands
Angie Reed

Hospice House needs Quilts

The Josie Harper Residence, Hospice House, is in need of replacement quilts. The Omaha Quilters Guild has generously donated enough quilts for each resident over the past few years. However, as it is not formally acknowledged that the quilts stay within hospice; families have taken quilts home with

them in memory of their loved ones.

I have delivered four quilts recently and have been asked if more could be made. To help hospice's ever increasing needs, I am looking for 12 quilts at this time but will take more. Quilts need to be machine quilted and at least 54 inches

by 76 inches to adequately hang over the size of the bed. There are both male and female residents; there are no children at this facility.

I do have members who have volunteered to machine quilt donated tops so tops with backs are wonderful as well. There is no time dead-

line but I would like to deliver a few quilts in a couple of months. Thanks ever so much. Everyone benefits from this worthy cause. Feel free to contact me, if you have any questions, at yankee56@cox.net or call 291-0669.

Pat Varner

Rising Stars

Did you ever wonder what goes on and how to get more involved in OQG?

At the September meeting of Rising Stars we are hoping to answer some of your

questions and give you some useful information.

Some of the officers and committee chairs will talk to us and tell us about what they do and how you can get

more involved in OQG.

We do not want you to miss a chance to become an active part of the guild.....and a chance to better the guild for us all.

Kathy Mainelli



Meeting Minutes Tuesday, May 11, 2010

President Kathy Havranek called the meeting to order at 7:00 PM. Carol Mc Cann introduced Sheila Green and Shirley Chaffee from Lincoln. The program was on "Memory Quilts". They entertained, taught, and inspired us to try something new.

Nellie McCallum from Nebraska Shakespeare accepted quilts from members for the June 24-July 11 performances. Our quilts are popular with audience members and they are very grateful for our work. They will celebrate their 25th season in 2011. Several of our quilts are on their homepage at www.nebraskashakespeare.com

The April minutes were approved as printed in the newsletter.

Old business:

Kathy read highlights from the survey we completed earlier this year.

Over 270 quilts have been entered in Quilt Show 2010. Be sure to sign up for your required hours. Help is still

needed for set up and take down. Contact Susie Jarosz with any questions. Kathy encouraged us to keep distributing flyers and inviting friends. Forwarding the e-mail about the show is a useful reminder. Our success depends on getting the word out about the show. Look for "Everlasting Beauty" on several local news stations at noon during the week of June 14th.

New business:

Thursday, May 13 at 4PM Past Presidents Patty Kennedy and Jan Fry along with Quilt Show Chair, Susie Jarosz will be interviewed on the radio program, The Art of Aging. Thanks to Angie Reed for connecting OQG to live radio. Chris Stewart, from the Respite Resource Center who attended our April meeting to receive quilts from Helping Hands, suggested quilting as the topic of the show to producer, Cathy Wyatt. Cathy has been promoting the Quilt show on KRCO 660AM on the radio dial. Be sure to tune in!

Kathy has appointed a new committee. The Recognition Committee will form criteria to honor members who have helped make OQG a success. Kathy has asked Past Presidents, Jane Fiala, Carol Mc Cann and Dee Acklie to serve on this committee.

Executive Board members and Committee members were seated in the front row "Reserved" seats as a thank you from Kathy. She presented them with beautiful tote bags embroidered with OQG and the year. The embroidery was done by new member, Clara Faulkner. Kathy thanked us all for our many volunteer hours for OQG this year and encouraged us to volunteer next year. She passed the gavel to 2010-11 President LaVonne Dunetts who called for Committee reports.

There will be changes in class cancellation policies next year.

The 2nd annual "Baltimore on the Prairie" will be held at Mahoney State park in September, flyers are available.

Hospice House needs memory pillow for families.

Harriet Hagedorn made 50 blocks for Quilts of Valor. Piecers and machine quilters are needed to complete them.

Helping Hands presented 21 quilts to the Eastern Nebraska Office on Aging.

Camp Wannamakablanke is full. A waiting list is available on the website.

The Nebraska State Fair is still looking for volunteers. The fair will be held in Grand Island August 27 through September 6, 2010.

Two sets of blocks were won.

Many door prizes were distributed. Be sure to send the thank you notes provided to the generous individuals that provide them for us.

Show and Tell followed.

The meeting was adjourned at 9:00 PM

Respectfully submitted,
Kathy Mainelli
Secretary

OQG Board Meeting Minutes Tuesday, August 10, 2010

The Budget meeting was called to order by President LaVonne Dunetts at 7:05 p.m. There were 10 members in attendance.

LaVonne Dunetts began the

discussion by calling on Denvia Capozio to report on the Block of the Month Committee.

All committees, their expenditures and expected expenditures

were discussed in turn.

LaVonne Dunetts and Treasurer Terri Caffrey will finalize the budget which will be printed in the newsletter.

The meeting was adjourned at 8:32 p.m.

Respectfully submitted,
Joyce Swift
Recording Secretary

Quilts of Valor

This summer a "Quilts of Valor" sew-in was held on July 31st. There were 12 in attendance.

Quilts of Valor will be holding a sew-in every month this year on the last Saturday

day of the month.

Location: Hospice House
7415 Cedar St.

Time: 10-4 PM.

Our current goal is to have 30 quilts and pillowcases

completed by Veterans Day in November 2010.

Please turn in all of your projects that were taken home at the September 2009 meeting.

We are in need red, white,

and blue fabric, long arm quilters and of course hands to sew.

If you have questions, please contact Sandy Pihlgren 345-6785 or at spihlgren@cox.net.

Sandy Pihlgren

OQG Fiscal 2008-09 & 2009-10 Budget verses Actual Income and Expenses

	2008-2009	2008-2009	2009-2010	2009-2010
Account name	BUDGET	YTD	BUDGET	YTD
Income				
Fall Retreat Income	\$ 12,000.00	\$ 14,350.00	\$ 14,500.00	\$ 13,524.00
Fundraising Quilt Income	\$ 5,000.00	\$ 2,599.00	\$ 4,000.00	\$ 4,497.75
Gifts Received	\$ -	\$ -	\$ -	\$ -
Helping Hands Income	\$ 500.00	\$ 500.00	\$ 500.00	\$ 500.00
Interest Income	\$ 1,700.00	\$ 1,313.03	\$ 1,200.00	\$ 906.07
Membership Income	\$ 9,000.00	\$ 8,500.00	\$ 8,500.00	\$ 8,362.00
Programs Income	\$ 10,000.00	\$ 11,943.10	\$ 12,000.00	\$ 8,797.00
Quilt Show Income (total)	\$ 15,000.00	\$ 18,005.87	\$ 20,900.00	\$ 23,093.53
Quilt Show CD Income	\$ 500.00	\$ 506.00	\$ -	\$ 968.00
Quilt Show Vendor Income	\$ 7,000.00	\$ 8,585.00	\$ -	\$ 6,390.00
Quilt Show Other Income	\$ 7,500.00	\$ 8,914.87	\$ -	\$ 15,735.53
Bus Tour Income FY06-FY08	\$ 1,500.00	\$ -	\$ 1,500.00	\$ 1,783.50
Spring Fling Retreat	\$ -	\$ -	\$ -	\$ 1,706.00
Web Site Income	\$ -	\$ -	\$ -	\$ 114.27
Total Income	\$ 54,700.00	\$ 57,211.00	\$ 63,100.00	\$ 63,284.12
Expenses				
Block Exchange	\$ 100.00	\$ 65.28	\$ 100.00	\$ 16.76
Board Expense	\$ 400.00	\$ 512.39	\$ 400.00	\$ 1,192.92
Capital Expense	\$ 1,500.00	\$ 2,884.04	\$ 500.00	
Community Connection/Education	\$ 100.00	\$ -	\$ 500.00	\$ 376.96
Fall Retreat Expenses	\$ 12,000.00	\$ 14,577.99	\$ 14,500.00	\$ 13,657.10
Fixed Expenses	\$ 6,000.00	\$ 5,403.76	\$ 5,500.00	\$ 5,714.60
Fundraising Quilt Expenses (total)	\$ 500.00	\$ 457.11	\$ 720.00	\$ 760.94
Raffle Ticket Expenses	\$ 250.00	\$ 222.80	\$ -	\$ 285.00
Other Fundraising Quilt Expenses	\$ 250.00	\$ 710.25	\$ -	\$ 475.94
Gifts/Donations	\$ -	\$ 2,500.00	\$ -	
Helping Hands Expenses	\$ 500.00	\$ 1,037.81	\$ 1,000.00	\$ 1,027.96
Historian Expenses	\$ 400.00	\$ 406.69	\$ 400.00	\$ 237.40
Library Expenses	\$ 250.00	\$ 49.30	\$ 100.00	\$ -
Membership Expenses	\$ 1,000.00	\$ 1,138.85	\$ 1,250.00	\$ 1,119.28
Newsletter Expenses	\$ 2,500.00	\$ 2,074.70	\$ 2,200.00	\$ 1,660.31
Programs Expenses	\$ 16,520.00	\$ 18,202.15	\$ 18,000.00	\$ 19,514.61
Quilt Show Expenses (total)	\$ 11,000.00	\$ 10,281.67	\$ 16,000.00	\$ 17,394.57
CD Expenses	\$ 200.00	\$ 98.52	\$ -	\$ 115.37
Other Quilt Show Expenses	\$ 10,800.00	\$ 10,183.15	\$ -	\$ 17,279.20
Rising Stars Expenses	\$ 20.00	\$ -	\$ 20.00	\$ -
Small Groups/New Members Expenses	\$ 35.00	\$ -	\$ 35.00	\$ -
State Fair Expenses	\$ 75.00	\$ 75.00	\$ 75.00	\$ 75.00
Spring Fling Retreat	\$ -	\$ -	\$ -	\$ 1,706.00
Web Site Expenses	\$ 300.00	\$ 300.00	\$ 300.00	\$ 341.90
Bus Tour Expenses FY06-FY08	\$ 1,500.00		\$ 1,500.00	\$ 1,682.00
Total Expenses	\$ 54,700.00	\$ 59,966.74	\$ 63,100.00	\$ 66,478.31
Balance	\$ -	\$ (2,755.74)	\$ -	\$ (3,194.19)

Camp Wannamakeablankie



Camp is quickly approaching. We are looking forward to another fun year at camp. At this time Camp is full. If you are interested in being placed

on a waiting list please send a completed form to LeAnne. Forms can be found on the OQG website.

You will be receiving final notice for camp payments soon. Please remember that final payment is due October 1. You may make payments at the September meeting. You must be a current OQG mem-

ber -so make sure you have paid your dues.

Each year we complete blocks for a quilt top. This year the top will be made with red batiks or red hand dyed and a white background. The new Camp block is on the website. Please note the color placement. We need this exact color placement to achieve the

secondary pattern for the completed top.

Start setting aside that special project to work on at camp. We are looking forward to great conversations, great time with friends and multiple projects reaching completion.

Dee Acklie & LeAnne Killion
Camp Directors

Save the date for the Spring Fling Retreat

I can barely believe our good fortune. Some poor group has had to cancel their retreat at the Archdiocese Retreat and Conference Center and we got their dates! And they're not just any dates; they're primo, super fantastic dates!

The second annual Spring Fling Retreat will be held February 18, 19 and 20th at

the ARCC. That is President's Day weekend so for those of you lucky enough to work for an employer who gives that Monday off, you'll have an extra day of weekend to recover from all your quilting fun.

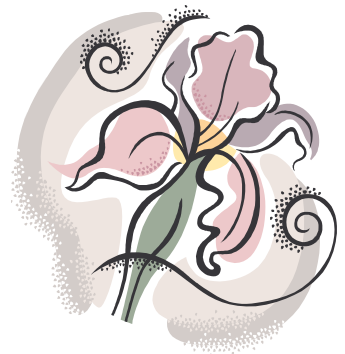
We can only accommodate 58 people and 21 people have reserved spots so far so if you think that you're in-

terested, please sign up soon.

We will announce a price for the weekend as soon as we get the new pricing from the ARCC.

Come escape the winter blahs at our retreat in the city.

Jan Fry and Karen Eveans



Opera for the Cure



Many of you remember that Mary Cave won the Grand Prize at the "Puttin' On the Pink" benefit for the Susan G. Komen Foundation back in April. Mary has decided to generously share her winnings with other OQG breast cancer survivors. Mary won tickets for six, to attend the Opera for the Cure on Sunday, October 17 at 2pm, at the Orpheum Theater.

At the September meeting,

Mary will have two drawings at her table. First, if you are an OQG member who has fought the battle of breast cancer, sign up for the drawing for a chance to join her for this special event. Five lucky winners will enjoy the "Sing for the Cure" performance along with Mary, at no cost. And there is more! Winners of the drawing will also win seats in the *Pink Limousine* provided by VIP limo. As they are chauffeured to the Orpheum, something bubbly will be served in the limo...

The second drawing will be for any OQG member attending the Sunday performance, to win a seat in the limo, which holds twenty quilters. The red carpet will

be rolled out upon arrival at the Orpheum, all first class!

Main floor seats have been reserved for our group. General public ticket prices are \$59.00, but will be offered to us at \$40.00 per ticket. \$5.00 of each ticket purchased benefits Nebraska Komen. Student tickets are always \$10.00. The Nebraska premier, and tenth anniversary performances of, "A Proclamation of Hope", is a moving, multimedia concert about the journey through breast cancer. It has raised awareness, and funds, for Komen across the country with uplifting messages of hope and determination.

Whether you have been to the Orpheum many times, or it will be your first, what better way to enjoy it than with other quilters while supporting Komen Nebraska. Stop at Mary's table and reserve your seat for this unique event.

submitted by
Kathy Havranek



New Quilt Show "Quilts in the Garden...Past and Present"

In connection with the annual Fall Chrysanthemum Show, The Lauritzen Gardens Guild will host a quilt exhibit and show November 12-14, 2010 in the beautiful visitor's center at Lauritzen Gardens (LG). The annual mum show, featuring brightly colored unique chrysanthemums as well as the first ever large scale chrysanthemum baskets, runs October 2 through November 21, 2010. LG has a stellar reputation for only putting on first class events, thus this quilt show will be a JURIED show. The International Quilt Study Center (IQSC) in Lincoln is participating in the event, and they have graciously agreed to exhibit quilts from their fabulous collection at the show. The majority of the quilts, however, will come from quilters in Nebraska and Iowa.

Here is your chance to have your best work displayed to an entirely new audience! Visitors from all walks of life, as well as your fellow quilters, will come to the show to see the flowers and the quilts. Here is how to submit photos of your quilts for consideration:

THEME: BOTANICAL. This is a broad classification and will include florals,

landscapes, wildlife if in a botanical setting, trees, leaves, mountains, seascapes, nature, plants, etc... If in doubt, send it in anyway!

SIZE: Anywhere from mini to bed size (NO king size)

TECHNIQUES: Any quilting technique is acceptable.

Hand or machine. Old or new.

EACH QUILT MUST HAVE A HANGING SLEEVE ATTACHED

QUILT SALES: If your quilt is selected, you may put a price on your quilt and offer it for sale; a 25% commission fee will be paid to LG. This commission if a fully deductible charitable contribution to the gardens. (Offering your quilt for sale, however, will neither increase nor decrease the chance of your quilt being selected)

HOW TO SUBMIT: Send 2 JPG pictures; one of the entire quilt front and one close up. Include in your submission your name, home address, phone number, email address, size of quilt, techniques used, and any history of the quilt that you would like to share. You do not need to be a member of any formal quilt guild in order to submit a quilt(s) for consideration. Please send in separate submissions for multiple quilts.

Send your JPG pictures and info to BOTH these addresses:

Kayla Scott
k.scott@omahabotanicalgardens.org

Teri Quinn teriSEWandSOW@aol.com

YOU MUST WORK A 2 HOUR SHIFT IF YOU HAVE A QUILT IN THE SHOW (If you live within a 75-mile radius of Omaha)

DEADLINE: All submissions must be received on line by Oct. 1, 2010; no exceptions. You will be noti-

fied via email if your quilt has been selected.

DELIVERY: Your quilt will need to be delivered by Nov 1, drop off locations will be announced later.

VENDORS: Vendor spaces will be available at a reasonable cost. Vendors will need to submit samples of their wares to be considered to ensure a wide variety of vendors and merchandise. Given the proximity to Christmas, vendors are needed that can offer high quality hand made merchandise (purses, stationary, weavings, cards, stockings, finished quilts etc). Vendors offering supplies (fabric, kits, embellishments, etc) are also needed. Emphasis will be on textiles, fibers and related products (no photography, ceramics, paintings, etc. No "crafts"). If interested in being a vendor, please contact Teri Quinn at teriSEWandSOW@aol.com ASAP.

ADMISSION COST: The normal garden daily admission rate of \$6.00 will apply, which includes access to all the outdoor gardens AND the show....a real bargain. Members of Lauritzen Gardens get in free. Consider a garden membership so you can return all year long to the gardens! Individual memberships begin at \$30, family are \$50 and can be purchased the day of the show. Your membership has many benefits including access to the 100 acre site, free admission to indoor floral displays and other shows, 10% discount in the gift shop, discount educational workshops and special

member events throughout the year. You can also join by visiting www.lauritzengardens.org.

This is an exciting opportunity for our Guild and is a win win for everyone. They have a large staff at the OBG who will hang the show, take admissions, do set up and clean up, etc. The main thing we need to do is lend them our quilts, and I know there are enough excellent botanical themed quilts already made to fill this whole show. In return, the LG will allow the guild to promote our guild with flyers, etc, and they will also mention our next quilt show in their quarterly newsletters prior to the show. They will take care of all the printed advertising, help the vendors set up, etc. This new show is NOT in competition with our guild show, but in fact, will help promote our show next year. Please consider submitting your best quilts; time is short so send in those JPG pictures now. Tell your non-guild quilt friends to also submit their quilts.

Also, even though the LG has the staff and equipment to hang the show, I am in need of someone who has experience in hanging a show to offer their guidance and expertise. I know there are many of you who have the experience to make this process run like clockwork. This is your chance to be in charge and have an entire staff of MEN at your beck and call to do what you tell them to do! They will do all the work; I just need a volunteer, or a team of volunteers, to work with the LG staff (continued on page 8)

New Quilt Show continued:

to offer help with the layout design, check in process, hanging process, take down, etc. Please call Teri at 402-393-3035 if you are inter-

ested. A FREE LG FAMILY MEMBERSHIP WILL BE GIVEN TO THE FIRST PERSON TO VOLUNTEER TO COORDINATE THIS

PART OF THE SHOW. We can also use help with many various other small jobs, even if you won't have a quilt in the show, so call me if you

would like to help in any way.

Questions? Contact Teri Quinn. teriSEWandSOW@aol.com Or 402-393-3035

Save the date Quilt Nebraska 2012

The Nebraska State Quilt Guild will hold its annual convention and meeting at the Omaha LaVista Conference Center July 26-29, 2012. With our successful quilt show fresh in our minds, excitement is building throughout the state and region for an entire weekend filled with classes, lectures, merchants, quilts, surprises and most of all, fun!

This convention's theme is "Quilt Magick" set in an English boarding school called ThimbleThreads Academy, School of Quilting and Creativity. Students will enjoy national, regional and local professors teaching their "magick" techniques with needle, thread, fabric, paint and machines. It is no secret that our quilting "magick" is alive and well stemming from our hearts, mind and through our hands, creating splendid and outstanding quilted works of art!

As part of registration, students will be sorted among

four houses in the school, named after four Nebraska Hall of Fame Quilters – Sara Dillow, Ernest B. Haight, Louise Howey and Grace Synder. There will be house colors, banners, and student pride throughout the weekend, all competing for the coveted "Golden Thimble Award".

Students and visitors will enjoy a themed merchants' mall called "Quilters Alley" set back in time to mid-19th Century England being able to participate in browsing/shopping to spend those gold, silver and copper coins as well as judging the best decorated merchant stall. Several quilt exhibitions are planned to include Nebraska Quilters Hall of Fame Gallery, First and Only, Never to Be Done Again – Halloween/Fantasy Quilt Exhibit, Fantasy Doll Display, Hoffman Challenge Quilts, Teacher and Convention Challenge Quilts. If that does do it for you, there will be a quilt show at Cabela's

(right across the parking lot), displaying log cabin, Nebraska, patriotic, and outdoors/wilderness-themed quilts.

The conference center and banquet hall will be transformed into a castle setting. There will be much music, pageantry and lots of great food during the nightly banquets. Other nightly entertainment will include a Pajama Party Show and Tell and "Midnight Mischief" (a late night area shop hop). The Embassy Suites are offering great room rates to include a 2-room suite and a "cooked to order breakfast" to all participants so everyone can enjoy those "after hour" activities without having to drive home.

How do I know all this, well, yours truly is the chairperson or the "Headmistress" of this event and on behalf of the Nebraska State Quilt Guild, I invite all quilters to experience a "one of a kind" event in July 2012. We have a web-

site and it is now available to view the front page – <http://quiltne2012.org/>. Information will be added so check back frequently.

There will be a meeting most likely in early November for all those who would like to know more and to possibly help with this event. Many hands will be needed in all aspects such as sewing items, hanging quilts, registration, teacher assistants, volunteers, etc. Time certainly flies by when you are having fun and before we know it, July 2012 will be here.....get your school robes ready!

This is only a sliver of what is to come in this event. I will be giving you more information through the newsletter and website throughout the months to come. Please feel free to contact me: headmistress@quiltne2012.org

Patricia Susan Joyce Varner
Headmistress,
ThimbleThreads Academy

Block Exchange

Welcome to Block Exchange. The committee—Denvia Capozio, Mary Schnitker, and Jeanette Podwinski—met this summer to choose block patterns and fabrics for your creative enjoyment. Did you know there are literally thousands of free-range blocks roaming around looking for someone to make them? It was hard to limit ourselves to just six, but we think we found a nice selection. So, here's what to do.

Drop by the Block Exchange

table and pick up a block kit. You'll find complete rules for the exchange along with a block pattern and a small piece of fabric to get you started. Delve into your stash for the other needed fabrics. The September pattern uses 2 1/2" strips—the kind found in jelly rolls.

Make the block and bring it back in October and drop it off at the Exchange Block table. Put your name in for the drawing to be held at the end of the

meeting. (We'll have paper and pens available.) We'll sort the blocks into groupings of 6-12 blocks. The more blocks returned—the more blocks we give away. But even if you don't make a block, drop by in October anyway. The table will be covered with colorful examples of our featured block. (And there's usually candy sitting around, too.)

Sounds simple, right? Just my speed.

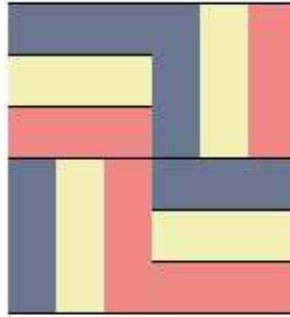
Hint of the Month: I love my

traditional green cutting mat, but sometimes it's too hard to see the cut edge of green (or blue or purple) fabric for the next cut. Mats come in other colors—yellow, pink, blue, gray—and I use them for needed contrast so my cuts stay straight. When I'm cutting out a large project I just layer them on top of each other and pull out the color I need for that fabric.

Submitted by
Denvia Capozio

Block Exchange Instructions

INTERLOCKED SQUARES 12 ½" unfinished (12" finished)



Cutting:

- 1- 2½" strip dark fabric, at least 30" long
- 1- 2½" strip medium fabric, at least 30" long
- 1- 2½" strip light fabric, at least 30" long

Sew all seams with a ¼" seam allowance.

1. Sew dark strip onto light strip along the long edge. Press towards the dark fabric.
2. Sew the medium strip onto the opposite long edge of the light strip. Press towards the medium fabric.
3. Square off one short 6½" edge of the strip set. Cut into four (4) 6½" squares. (It helps to align the ruler lines on the seams to keep the units square as you cut them.)
4. Rotate the squares and sew them together into pairs as shown in the diagram. Sew the pairs together to form a 12½" unfinished block.

If you don't want to make a strip set you can cut the following pieces:

4 - 2½" X 6½" rectangles of each of the three fabrics.

Lay the rectangles out to resemble the finished block and sew the pieces together. It may take a little more time, but no one will know the difference in the finished block.

Comments: Strip piecing can make shorter work of making a lot of 4- and 9-patch blocks.

Press gently to avoid distorting seams.

Foreshadowing – you'll see this technique used again in a later block.

September 2010