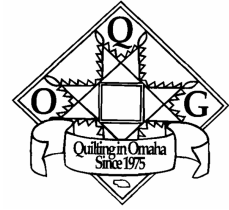




February 2010



The Official Publication of the Omaha Quilters' Guild

**Next Newsletter
Deadline:**
Feb 16, 2010

Next OQG meeting: Tuesday, February 9, 2010

Email Elizabeth Kannedy at oqgnnewsletter@yahoo.com or mail to: 13308 South 33rd Street, Bellevue, NE 68123-2369

INSIDE THIS ISSUE

President Notes continued	2
Membership	2
Community Connections	2
IQSC Price Change	2
Quilt Show	3
Quilt Show Judge	3
The Gathering update	3
Quilt Show Entry Form	4
Entry Form Instructions	5
OQG Meeting Minutes	6
Helping Hands	6
Modern Quilter	6
Block Exchange	7
Modern Quilter continued	7
Workshop Registration	7

February Program

The February meeting will have us showcasing the talents of one of our own members. Lynn Tolles will be speaking to the guild about "Supporting Your Quilting Habit in a Down Economy." This should give great advice to all of us as we try to conserve.

She will also be teaching a workshop on "Beads and Charms from Fabrics and Fibers." The workshop

is full at this time.

Another Nebraska quilter will be with us in March. Judy Woodworth is a talented long arm quilter, designer, and machine quilter.

Judy has won many awards for her quilts. She will share her talents with us at two workshops.

On March 6, she will teach "Whole Cloth Design" this class is

currently full, but I will take names for a waiting list.

She will offer a design workshop on March 7. This class has room for a few more participants. The cost for the class is \$25.

Both of the classes will be held at Country Inn and Suites. The supply lists for the classes are on our website.

Carol McCann

**OQG
Board Meeting
Mar 2, 2010
7 pm
Lutheran Church
of the Master**

President's Notes

Happy New Year!

Winter has certainly posed challenges for us all. I am so grateful for *all* of your contributions to the Children's Emergency Project, especially because of the change of date. Making the evening special for us all,

thanks goes to the following organizers: Dee Acklie, Puzzler Princess. Becky Draper, reigning Mini-Raffle Queen, LaVonne Dunnets, Arranger of Angel Bags. Elizabeth Kannedy, Keeper of Auction Items Carol McCann,

Program and Music Maker. Pat Sears, Stocking Fairy. Pat Varner, Auctioneer Extraordinarre. The end result of your combined work spread happiness in countless ways during the Holidays.

(continued on page 2)



President's Notes continued:

What a terrific start to 2010 with your work on Helping Hands projects at the January meeting. Special thanks to Andi Chakravarti for setting up our rooms, Mary Dudzinski's "crazy quilters" in Rising Stars and of course, Angie Reed's "angels" for

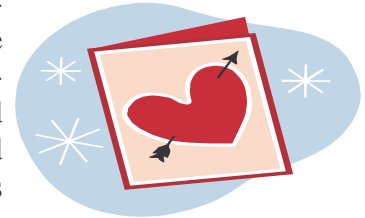
providing us with projects to work on. Your time on these projects makes OQG shine, thanks to one and all.

February brings to mind friendship, hearts and love. As quilters, at times our stitches blend these familiar

themes together in fabric, and bring us unexpected results. Whether we are happy, sad, or even surprised with the results, we learn valuable lessons along the way. Fabric and friendship are always good things to keep on hand to fight the frosty days

and nights of winter.

Kathy Havranek



Membership



For our countdown of why it is great to be a member of OQG, number four is our website. Everything you need to know about us, our officers, our workshops, our quilt show, our

meeting content and location....plus much more can be found on our wonderful website. We will have many prizes for February just as we have for all of our meetings, in-

cluding January!

If you have prizes you want to donate, just drop them off at the membership table.

DeAnne Mack

Community Connections

The January Thaw Quilt Show at the Archdiocese Retreat and Conference Center has come together nicely.

Thank you to all the members who lent their quilts and gave their time to help us take ad-

vantage of this tremendous opportunity to share our work with the public.

I hope that you were able to attend the show and the musical performances.

We will have a sewing

day at the Hospice House on Feb. 13.

Please join us. We have 3 more quilts that we have committed to make for area charities.

We work from 9-3. Bring a lunch and your machines.

If there are any other needs, we will make an announcement at the guild meeting on Feb. 9.

Jan Fry

International Quilt Study Center Price Change

Please note that the price of general admission to the International Quilt Study Center & Museum has changed to \$6 per adult and \$12 for a family of two adults with their children/grandchildren under the age of 18.

The hours of operation are Tuesday - Saturday from 10:00 AM - 4:30 PM and Sunday from 1:00 - 4:30 PM.

Hour-long docent-guided tours of the exhibitions are open to the public on Wednesdays at 11:00 AM and Satur-

days at 11:00 AM and 1:00 PM.

The current exhibitions include the second rotation of "Four Part Harmony: The Linda Carlson Four-Block Quilt Collection" until 3/28/10, and "Perspectives: Art,

Craft, Design, and the Studio Quilt" until 5/9/10.

If you have any questions or concerns please contact IQSC Communications Coordinator, Maureen Ose at mose2@unl.edu.

2010 Quilt Show



Volunteer sign up will be available at each meeting. Donate at least one 2hour shift for each quilt entered in the show. Free admission for the day you work. Admission tickets will be provided for volunteers working the pre and post show volunteer shifts.

We are working on some surprises for our volunteers. Sign up and support your guild's show.

The Quilt Show Entry form and instructions are in this month's Newsletter. They will also be available on the OQG Website.

Deadline for the form is April 13, 2010. It can be turned in at an OQG meeting or mailed to:

Ms. Julie Schram
2545 North 63rd Street
Omaha, NE 68104

Susie Jarosz
Quilt Show Chair

2010 Quilt Show Judge



Linda McCuean learned to sew at the age of 9 in

a 4H club and has been making quilts for over 30 years. After 20 years of hand quilting, she began quilting on a Gammill longarm quilting machine and it was love at first stitch! Linda has been quilting on the longarm for 10 years and her quilts have won top honors at many national and in-

ternational quilt shows, including numerous best of show honors. Linda's whole cloth quilt 'Bella' was the top winner in the \$100,000 Quilting Challenge 2006 and was featured on the Today Show. 'Bella' was designated a Masterpiece Quilt in the National Quilting Association's Master

Quilt program in 2007.

Linda is an NQA certified judge. She enjoys presenting trunk shows of her work, and teaching longarm quilting classes. Linda and her husband, Don, live in New Galilee, PA.

Submitted by Cindy Erickson

Update on the Gathering Project

The gals from my PILLOW POSSE have been busy creating all sorts of wonderful artistic pillows for The Gathering, which is the fund raiser for Sacred Heart School in North Omaha.

Check out the pictures of their great work on the OQG website www.omahaquilters.org.

Jill from Cottonwood was so inspired and had so much fun that she made one complete pillow, and

4 other tops that just need to be embellished. These tops are really great and just need a little embellishment added to them to make them really sizzle. So, if you wanted to help with this project, and embellishing is your 'thing', this would be a really easy and fun project. I'll finish the embellished top into the final pillow for you if you don't want to do that part.

Several gals who volunteered early on to create a

pillow had to drop out because of family illnesses or just getting themselves too overcommitted, so if you'd like to try your hand at making an 18" non-traditional pillow top for a great cause, call me at 393-3035 or email me at : terisewandsow@aol.com.

These don't need to be done until the end of Feb, 2010.

Sponsors have to donate a minimum of \$3,000 to get

one of these pillows, so your time will be well rewarded.

I also have some pillow tops that need just a little more pizazz added to them. I have some suggestions, but feel free to do what ever strikes your fancy. The pillow forms are easily removable so you can work on these flat.

Teri Quinn

32nd Annual Quilt Show "Spoken Without A Word"

June 18-20, 2010

Complete a separate form for each item entered. Please print or type all information. **Keep a copy for yourself.**

ENTERED BY:

Name _____
 Address _____
 City _____ State _____ Zip _____
 Phone _____ Cell _____
 Email _____

ENTRY INFORMATION

Name of Item _____
 Maker _____
 Owner _____
 Year (s) Made _____

Judging: Select all that apply
 Item is to be **NQA JUDGED**
 Item is for **SHOW ONLY—NOT TO BE JUDGED**

DIMENSIONS: (Not necessary for clothing or dolls.) Please be as accurate as possible, so we may hang your item properly!
 _____ inches x _____ inches
 WIDTH ACROSS (TOP) X LENGTH DOWN (SIDE)

Box 1 - Entry Category: Select 1 Only

- 1 Bed Quilt, Pieced, Hand Quilted
- 2 Bed Quilt, Pieced, Machine Quilted
- 3 Bed Quilt, Appliquéd, Hand or Machine Quilted
- 4 Bed Quilt, Mixed / Other, Hand or Machine Quilted
- 5 Wall hanging / Throw, Pieced, Hand Quilted
- 6 Wall hanging / Throw, Pieced, Machine Quilted
- 7 Wall hanging / Throw, Appliquéd, Hand Quilted
- 8 Wall hanging / Throw, Appliquéd, Machine Quilted
- 9 Wall hanging / Throw, Mixed / Other, Hand Quilted
- 10 Wall hanging / Throw, Mixed / Other, Machine Quilted
- 11 Innovative Art
- 12 Crib / Baby, Hand or Machine Quilted
- 13 Miniature, hand or Machine Quilted
- 14 Clothing
- 15 Professional, Hand Quilted
- 16 Professional, Machine Quilted, Bed Quilt
- 17 Professional, Machine Quilted, Wallhanging
- 18 Group Quilt
- 19 Other
- 20 Junior (18 years and under)

Box II - Quilting (Select 1)

- 1 Machine Quilted by _____
- 2 Hand Quilted by _____
- 3 Professionally Quilted by: _____
- 4 Tied (not judged)

Box III - Additional Categories

- (select all that apply)
- 1 First Quilt Show Entry
 - 2 Holiday Theme
 - 3 Scrap Quilt
 - 4 Challenge
 - 5 Quilt for a Cause
 Name of Charity _____

**Deadline for all Entry Forms is
 April 13, 2010**

Forms can be turned in at Guild Meetings,
 online or mailed to
Ms. Julie Schram
2545 N 63rd Street
Omaha, NE 68104

Below write the DESCRIPTION of your quilt: LIMIT 60 WORDS! Please include your design source, pattern, book or class. Tell us what you want the public to know. Feel free to attach a second sheet .

I authorize the Omaha Quilters' Guild to use a photographic image of my quilt and the Entry Information as stated above as an identifier of this quilt on their web-site or any public venue.

DISCLAIMER: In consideration of the right to participate, entrants release and discharge the Omaha Quilters Guild and all its members from all responsibility for any damage or loss that maybe suffered by their property. Please list any spots, cuts, marks, or damaged areas on your item _____ . The Show chairman reserves the right to move the item to a more appropriate judging category. The Judge reserves the right to disqualify any item not meeting published criteria.

Signed _____ Dated _____

QUILT SHOW ENTRY INSTRUCTIONS

Please read carefully before completing entry form!! A separate form must be completed for each item entered. **PLEASE PRINT** all information. Make additional copies of the entry form as required. Completed entry forms must be received by the quilt show co-chairman **no later than April 13, 2010**. **DO NOT TURN IN QUILTS AT THIS TIME**. Receipt of entry form by this date allows time for the preparation of the quilt show booklet and planning of exhibits.

ABSOLUTELY NO ENTRY FORMS WILL BE ACCEPTED AFTER APRIL 13, 2010!

General Information

Entrant must be a paid member of the Omaha Quilters Guild. All entries must be clean, constructed of fabric and be quilted. Entries may be evaluated, at the entrant's request, by a National Quilting Association (NQA) certified judge. A **MAXIMUM** of 10 items may be entered for exhibition; a **MAXIMUM** of 3 of the 10 items may be judged. The challenge quilts do not count as one of the 3 judged entries unless you also indicate that you want this item judged by the NQA judge. Quilts should be clean, smoke and odor free. We reserve the right not to exhibit quilts that do not meet these standards. If an item is judged, entrant will receive a written evaluation form after the close of the show. Ribbon awards are given at the discretion of the judge.

Items which have been exhibited or judged in a previous Omaha Quilters Guild show may not be entered. All entries to be **JUDGED** must be the work of the entrant, **EXCEPT** in the case of professionally quilted quilts and group quilts. Items which are not the work of the entrant may be entered for exhibit only.

The judge reserves the right to disqualify any item not meeting published criteria. No special hanging or handling will be allowed. If you wish to make comments to the judge, they should answer questions regarding the technique, and need to be attached to the entry form. (Make a copy for yourself.)

REMEMBER TO SIGN AND DATE THE FORM AND KEEP A COPY FOR YOURSELF!

Description of Technique

Pieced: Entry contains hand or machine piecing. Small amount of other techniques permitted.

Appliquéd: Entry contains hand or machine appliqué. Small amount of other techniques permitted.

Mixed: Entry is constructed using a substantial amount of two or more techniques, such as appliqué and piecing. It doesn't include quilting and trapunto.

Other: Entry is constructed using one special technique such as whole cloth, stenciled, shadow, appliqué, embroidered etc. Please describe technique in appropriate space on entry form.

Box 1-Entry Category: Select 1

All entries will be exhibited and/or judged by category. Each entry can be entered in **ONLY ONE** category. Quilt show chairman reserves the right to move entries to a more appropriate category for judging.

Bed Quilt: Quilt intended for use on a bed. Minimum size 60" wide x 72" long. Is generally traditional.

Wall Quilts/Throws: Quilt intended for wall display or use as a throw. Is generally traditional.

Innovative Art: A unique and/or original interpretation (any size).

Crib/Baby Quilt: Quilt intended for use by a baby or child.

Miniature: Small version of a large quilt. Must be in scale. Maximum size is 24" by 24" .

Clothing: Any pieced or appliquéd, and quilted, garment.

Professional Quilted: Quilted by a professional for hire, by hand or by machine. Write the name of the company (or individual) on the entry form in the appropriate space.

Group Quilt: Entry made by two or more people. Entry must be made under the name of the owner OR the name of the individual in charge of the project. Entry must have been quilted by an Omaha Quilters' Guild member(s). This category does not include professional (for hire) quilted quilts.

Other: Dolls, tablecloth, tree skirt, totes, crazy quilts etc. Please describe item in appropriate space on the entry form. Note: Dolls will not be judged.

Junior: Must be made by a Junior Member (any size) and all the work on the quilt must be done by the Junior Member. Junior Members are under 18 years old..

Box 2- Quilting: Select 1 and fill in the name of quilter

Machine Quilted: Entry contains machine quilting. May include some hand quilting.

Hand Quilted: Must be quilted entirely by hand.

Professionally Quilted, for hire: Quilter was paid to quilt by hand or machine.

Box 3-Additional Information: Check All that apply

First Quilt Show Entry: First Quilt Show Entry (ever).

Holiday Theme: Entry represents holiday theme (Christmas, Halloween, etc.)

Scrap Quilt: Must contain a minimum of 50 different fabrics, excluding backing fabric(s).

Challenge: "Speak WITH a Word!" must follow all the guidelines set by the challenge committee. Details can be found on the website or from the Challenge committee. Challenge fabric on the quilt is required.

Quilts for the Cause: Quilts entered in this category are quilts that are or have been donated to raise funds for other nonprofit charities. Entrant must specify which charity is to receive the quilt.

OQG Meeting Minutes January 12, 2010

The meeting was called to order by President Kathy Havranek at 7:00 PM

There were no minutes to be read from the December meeting.

New Business:

Member Linda Somerville is facing health issues. Members are encouraged to send cards.

Old Business:

Gary Bosanek from the

Archdiocese Retreat and Conference Center invited us to attend the upcoming January Thaw Quilt Show January 26 to 31st.

The Musical Whine, Women and Song Part Two, Still Whining is also

being offered.

Committee Reports were given and the meeting was adjourned.

Respectfully submitted,
Kathy Mainelli

Helping Hands

Hello everyone.

First I want to say thank you to everyone that came to make charity quilts at the January Sew In. This was event to remember! I hope you enjoyed the kits and the samples.

I enjoyed the opportunity to explain to new members about Helping Hands and the purpose of the January Sew In. I am grateful to the existing members who took the new members by the hand to make sure they enjoyed

the Sew In and that they were included in one of the projects.

I would like to extend my thanks to everyone that helped to make it a fun evening. To Terri H. thank you for finding and sewing the test sample kits. For Mary M. and her helpers thanks for taking the finished tops, cutting the batting and backing fabric for tying. And last but not least, to Rita, Fran and everyone who help clean up.

I would also like to thank the Membership committee for supplying the door prizes. There was a drawing for attending and/or turning in a quilt top. However in the end everyone was a winner.

Pictures have been posted on the OQG website. You can view them by going to www.omahaquiltersguild.org website and clicking on the pictures link in the Helping Hands article.

Don't forget to stop by

Helping Hands At the Next OQG meeting to pickup a kit.

If you pickup a Downy kit we look forward to seeing the top and/or finished quilt turned in at the next meeting.

As always don't forget it's the quilter's of this guild that make Helping Hands what it is today.

Thank You,
Helping Hands Chair
Angie Reed

Modern Quilter



This month's modern quilter is our Property Chair Andy Chakravarti.

How long have I been quilting? I completed my first comforter at 16 years of age. It was not the work of an overachiever.

Who, or what, inspired

you to quilt? I always liked to play with fabric even as a kid, begging Mom to buy me a remnant on shopping trips. We used comforters at home that my late grandmother had tied. Mom sewed exceedingly little nor did she quilt but encouraged me to play with the old 1950 Singer and make a quilt. We figured out how to sew squares together (more or less), and my friend's grandmother helped me put the quilt in a frame and get started tying. The bind-

ing? Eeesh, that's a story best left untold.

How long have I belonged to the OQG? Going on six years

In what positions have I served? Properties chair. What can I say; I'm a creature of habit.

What was my first piece and where is it now? That comforter is still in use in our home; I snuggle up with it when I'm on call. The 4" squares of cotton and poly/cotton have held together sur-

prisingly well with a blanket batting.

What is my latest piece and plans for it upon completion? Gee... which one? The one farthest along is a whole cloth wall hanging. It will go in the quilt show and then grace my wall.

What has quilting brought into my life that I did not expect? Exposure to incredibly sophisticated works of art. I feel so high-brow at our shows.

Block Exchange

Looking forward to seeing all the heart's coming back at the February Meeting!

Stop by and see the blocks!

OQG has so much talent!!!

You come up with so many idea's.

Rojene Grigg



Modern Quilter continued:

Where have I traveled to see quilts, see a show, or to buy fabric:

My husband and I traveled to Florida, not specifically to see a show but took advantage of an opportunity to make a side trip to the Stephen Foster Monument to take in the

Lady of the Lake Guild Quilt Show in 2004. Trips to India include a mandatory stop at a fabric store.

What is my proudest accomplishment?

A "Red Diamond" quilt; pattern courtesy of Kaffe. It consisted of

rows of diamonds of 21 different floral fabrics; all cut on the bias. "It'll be easy," said dear husband. "They're all the same size." I did hire someone to quilt it and then proudly delivered it to in-laws in India.

To sum it up, I feel the world of quilting is entirely inclusive. A body can make a project as simple or as complex as they wish, conveying whatever message they want (or not), and the thing usually turns out looking pretty good.



2009-10 OQG Workshop Registration Form

Please register on line using the form on the OQG website. Send your Check (payable to OQG) to Carol McCann, 13954 P Street, Omaha, NE 68137-1534

Name _____

Address _____

City, State, zip _____

Daytime Phone Number _____

Email Address _____

Please sign me up for:

___ Judy Woodworth "Composition and Design" Sunday March 7, noon to 6:30pm

Cost : Members \$25.00 **Location :** Country Inn and Suites, 11818 Miami St, Omaha, NE

___ Ann Johnson "3-Day Workshop -Dye Painting Plus " Saturday April 10 & Monday April 12, 9am to 4pm and

Sunday April 11 noon to 6:30pm **Cost:** \$125, **Supply Fee:** TBD, **Location:** Walsh Hall, College of St. Mary's

.If you need to cancel your attendance at the class, we require seven days notice for a refund.